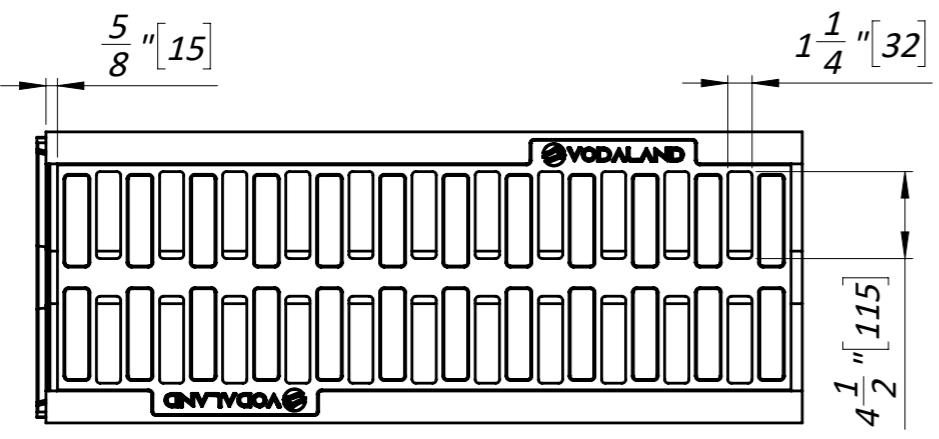
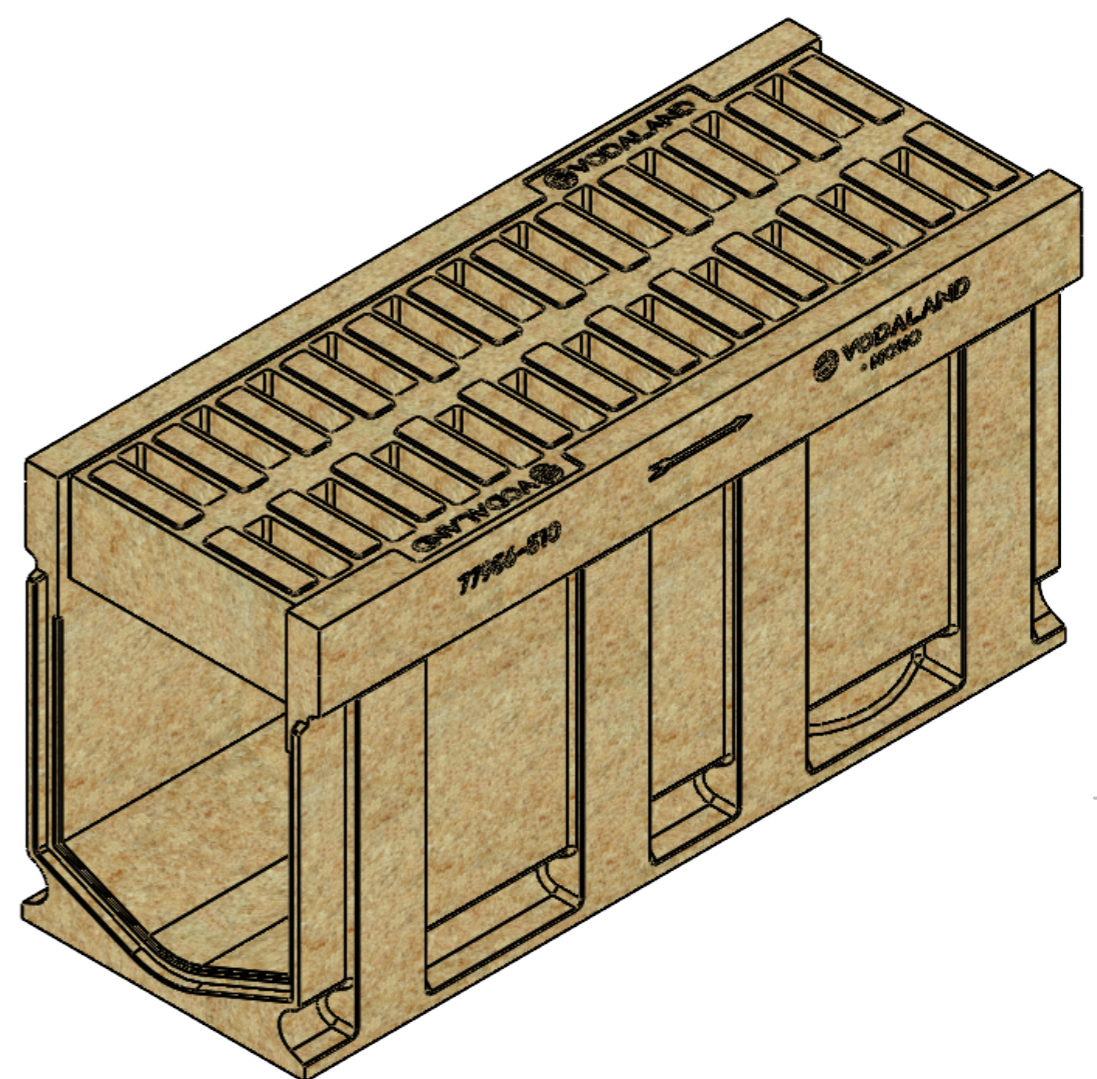
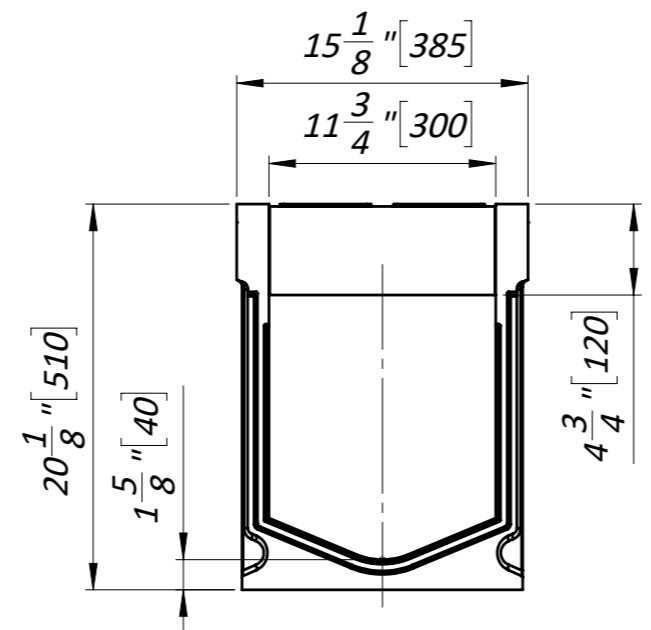
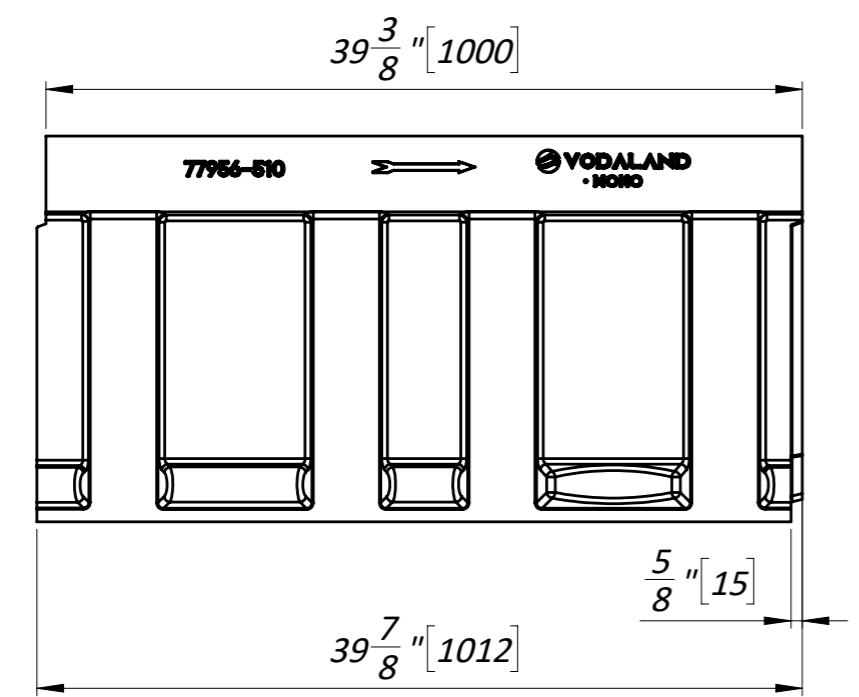


8 7 6 5 4 3 2 1

F
E
D
C
B
A



1. Dimensions for reference, inch [mm]
2. Area of water intake slots 139.5 sq in [900 sq cm]
3. Delivery and packaging are carried out in accordance with the terms of the contract
4. The manufacturer reserves the right, without notice to the consumer, to make changes to the design of the products for improvement of their technological and operational parameters, which will not affect the quality and properties of the product
5. Deviation of the actual weight of the nominal can be up to 10%.

UNLESS OTHERWISE SPECIFIED: DIMENSIONS ARE IN MILLIMETERS SURFACE FINISH: TOLERANCES: ISO 2768 - C LINEAR: ANGULAR:		FINISH:		DEBURR AND BREAK SHARP EDGES		DO NOT SCALE DRAWING		REVISION	
DRAWN		NAME		SIGNATURE		DATE		TITLE:	
CHK'D		Kozak				18.10.22		12" [DN300] Polymer Concrete Drain Monoblock Mono H20.1" [H510] F900	
APPV'D		Kyselytsia						ARTICLE:	
MFG		Malynovskiy						77956-510	
Q.A						MATERIAL:		A3	
						Polymer Concrete		SCALE:1:10	
						WEIGHT: 367.4 lb / 167.2 kg		SHEET 1 OF 1	